



EXPLORE YOUR

## OPPORTUNITIES

You are driven by growth and impact. MIT Sloan's culture of exploration and collaboration will open up a new world of opportunities, whether your goal is a position with a market-leading company, a high-growth or social impact organization, or a new venture.

The Career Development Office will guide you in taking your next step, providing customized resources, educational experiences, and industry connections to help you succeed in the MBA job market.

### Top Industries

**31.1%** Technology    **18.5%** Finance  
**27.6%** Consulting

**\$150,000**    **\$34,000**  
Median Base Salary    Mean Signing Bonus



of students received a full-time offer within 3 months of graduation

### Featured Employers

- |                         |                        |
|-------------------------|------------------------|
| AB InBev                | McKinsey & Company     |
| Amazon                  | Microsoft              |
| Amgen                   | NextEra Energy         |
| Apple                   | Nike                   |
| Bain & Company          | PanAgora               |
| Blue Origin             | Rivian                 |
| Boston Consulting Group | Toast                  |
| Goldman Sachs           | Vertex Pharmaceuticals |
| Google                  | Wayfair                |
| IBM                     |                        |
| JP Morgan               |                        |

Students accepted opportunities with

**300 Companies**

Top reason for accepting position:

**Growth Potential**

Read more in the [2020–21 MBA Employment Report](#) online.

### MIT Sloan Master of Business Administration

# MBA

## Invent the future. Start with yours.

Through intellectual rigor and experiential learning, the full-time, two-year MIT Sloan MBA program develops leaders who make a difference in the world.

### START WITH THE CORE, THEN FOLLOW YOUR OWN PATH

Our curriculum is as individual as you are. It's flexible and customizable, letting you target your specific aspirations. You'll be challenged and inspired, working collaboratively with students, faculty, and global organizations.

#### 1 Semester Core

Plus more than 215 MIT Sloan electives and hundreds of MIT courses

#### 3 Tracks

Finance, Enterprise Management, Entrepreneurship & Innovation

#### 3 Certificates

Business Analytics, Healthcare, Sustainability

#### 15+ Action Learning Labs

Take the idea of learning-by-doing to a whole new level

#### 3 Dual Degrees

MIT Leaders for Global Operations (LGO), dual degree with MIT Department of Urban Studies and Planning (DUSP), dual degree with Harvard Kennedy School (HKS)

# MBA

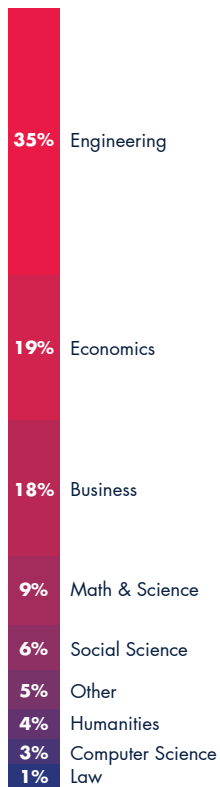
## MBA PROFILE

# CLASS OF 2023

At MIT Sloan, the diversity of our students both shapes and drives the incredible opportunities available for learning and collaboration. Learn more about our [commitment](#) to diversity.

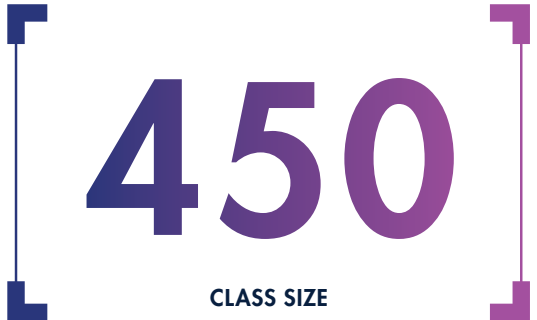
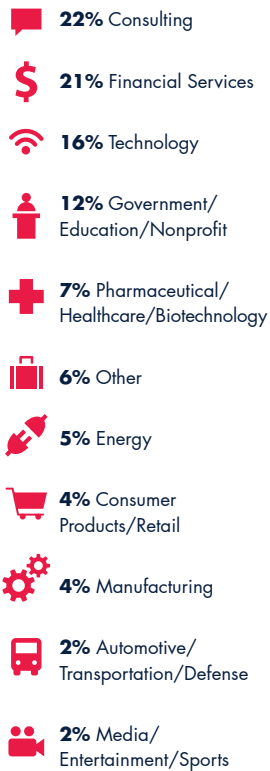
*Note: Profile as of September 15, 2021*

### UNDERGRADUATE MAJORS



### PRE-MBA INDUSTRY

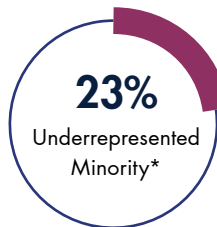
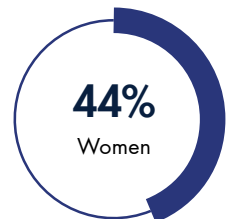
*Rounded to nearest percent*



### BY THE NUMBERS

**64**  
Countries Represented

**5 years**  
Average Work Experience



*\*Find more detailed class profile demographics and definitions [online](#).*

### ACADEMICS

**3.59**  
Median Undergraduate GPA

**730**  
Median GMAT\*\*



*\*\*As a result of the ongoing COVID-19 pandemic, the test requirement was relaxed for the 2020-21 admission cycle; applicants were allowed to apply, and some were admitted without a test score. This data represents only those students who applied and were admitted with a test score.*



**DISCOVER MORE**  
[mitsloan.mit.edu/mba](https://mitsloan.mit.edu/mba)



MIT is committed to the principle of equal opportunity in education and employment. Read our full [nondiscrimination policy](#).